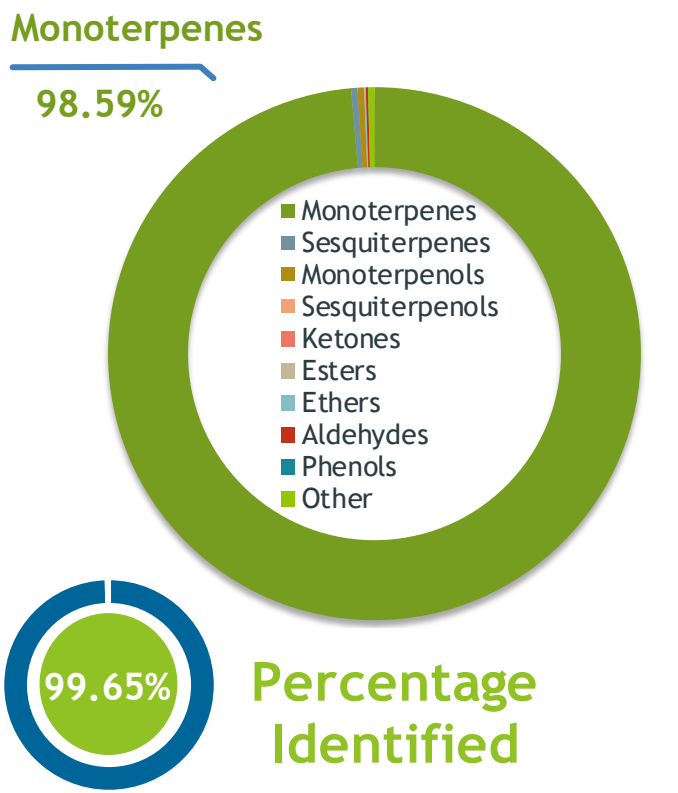


Client  **Source** 

Tangerine (*Citrus reticulata* blanco var *tangerina*)
NF-TANG-19-A

Sample Tangerine (*Citrus reticulata* blanco var
Batch #:..... NF-TANG-19-A
Type:..... Essential Oil
CAS Number:... 8016-85-1
Nature's Fusions



Client  **Website** 

Primary

89.77% Limonene
3.79% gamma-Terpinene
2.42% Myrcene

Result 

Conclusion No adulterants, diluents, or contaminants were detected via this method. This oil meets the expected profile for genuine essential oil of Tangerine (*Citrus reticulata* blanco var *tangerina*)

Internal Number: | EVS-2888


Essential Validation Services
747 SW 2nd Ave IMB 12 Suite 306
Gainesville, FL 32601
317.361.5044 |
<https://essentialvalidationservices.com/>
adam@essentialvalidationservices.com


Monoterpenes	98.59%	98.59%
Sesquiterpenes		0.39%
Monoterpenols		0.39%
Sesquiterpenols		0.00%
Ketones		0.00%
Esters		0.04%
Ethers		0.07%
Aldehydes		0.13%
Phenols		0.00%
Other		0.39%

ESSENTIAL VALIDATION SERVICES | 747 SW 2ND AVE GAINESVILLE, FLORIDA 32601 | 317-361-5044

Client


Nature's FUSIONS
 ESSENTIAL OILS

Source



Tangerine (Citrus reticulata blanco var tangerina)
 NF-TANG-19-A

Total Percentage		99.65%			
Number	RT	Area %	Compound Name	RI	Chemical Family
1	12.64	0.17%	alpha-Thujene	927.80	Monoterpene
2	12.91	1.03%	alpha-Pinene	936.10	Monoterpene
3	14.59	0.22%	Sabinene	973.00	Monoterpene
4	14.72	0.37%	beta-Pinene	974.00	Monoterpene
5	15.32	2.42%	Myrcene	989.20	Monoterpene
6	15.88	0.07%	alpha-Phellandrene	1002.00	Monoterpene
7	16.13	0.01%	delta-3-Carene	1008.00	Monoterpene
8	16.41	0.06%	alpha-Terpinene	1014.00	Monoterpene
9	16.77	0.43%	para-Cymene	1024.30	Monoterpene
10	17.06	89.77%	Limonene	1029.50	Monoterpene
11	17.29	0.02%	(Z)-beta-Ocimene	1037.80	Monoterpene
12	17.70	0.07%	(E)-beta-Ocimene	1047.70	Monoterpene
13	18.16	3.79%	gamma-Terpinene	1054.00	Monoterpene
14	18.60	0.04%	1-Octanol	1075.14	Aliphatic Alcohol
15	19.37	0.16%	Terpinolene	1092.10	Monoterpene
16	19.76	0.28%	Linalool	1099.00	Monoterpenol
17	19.94	0.01%	Nonanal	1104.00	Aliphatic Aldehyde
18	21.14	0.04%	cis-Limonene oxide	1136.00	Monoterpene Ether
19	21.32	0.03%	trans-Limonene oxide	1138.10	Monoterpene Ether
20	22.83	0.01%	Terpinen-4-ol	1180.57	Monoterpenol
21	23.31	0.10%	alpha-Terpineol	1191.71	Monoterpenol
22	23.77	0.08%	Decanal	1206.57	Aliphatic Aldehyde
23	25.27	0.01%	Neral	1246.57	Monoterpene Aldehyde
24	26.14	0.01%	Geranial	1272.00	Monoterpene Aldehyde
25	26.36	0.02%	Perilla aldehyde	1281.00	Monoterpene Aldehyde
26	29.27	0.04%	Neryl acetate	1362.90	Monoterpene Ester
27	30.34	0.08%	beta-Cubebene	1390.50	Sesquiterpene
28	31.70	0.03%	gamma-Elemene	1434.00	Sesquiterpene
29	32.29	0.03%	Germacrene D	1484.71	Sesquiterpene
30	32.45	0.01%	alpha-Humulene	1461.43	Sesquiterpene
31	33.66	0.05%	Valencene	1504.00	Sesquiterpene
32	33.87	0.13%	(E,E)-alpha-Farnesene	1508.14	Sesquiterpene
33	34.50	0.06%	delta-Cadinene	1524.14	Sesquiterpene

 ESSENTIAL VALIDATION SERVICES | 747 SW 2ND AVE GAINESVILLE, FLORIDA 32601 | 317-361-5044



Essential Validation Services



Sample:

Client: | Nature's Fusions
Sample: | Tangerine (Citrus reticulata blanco var tangerina)
Batch # | 4272307
CAS Number | 8008-31-9
Type: | Essential Oil

Conclusion:

- No adulterants, diluents, or contaminants were detected via this method.



X 

Validated By:

Essential Validation Services

747 SW 2nd Ave, Gainesville, FL 32601

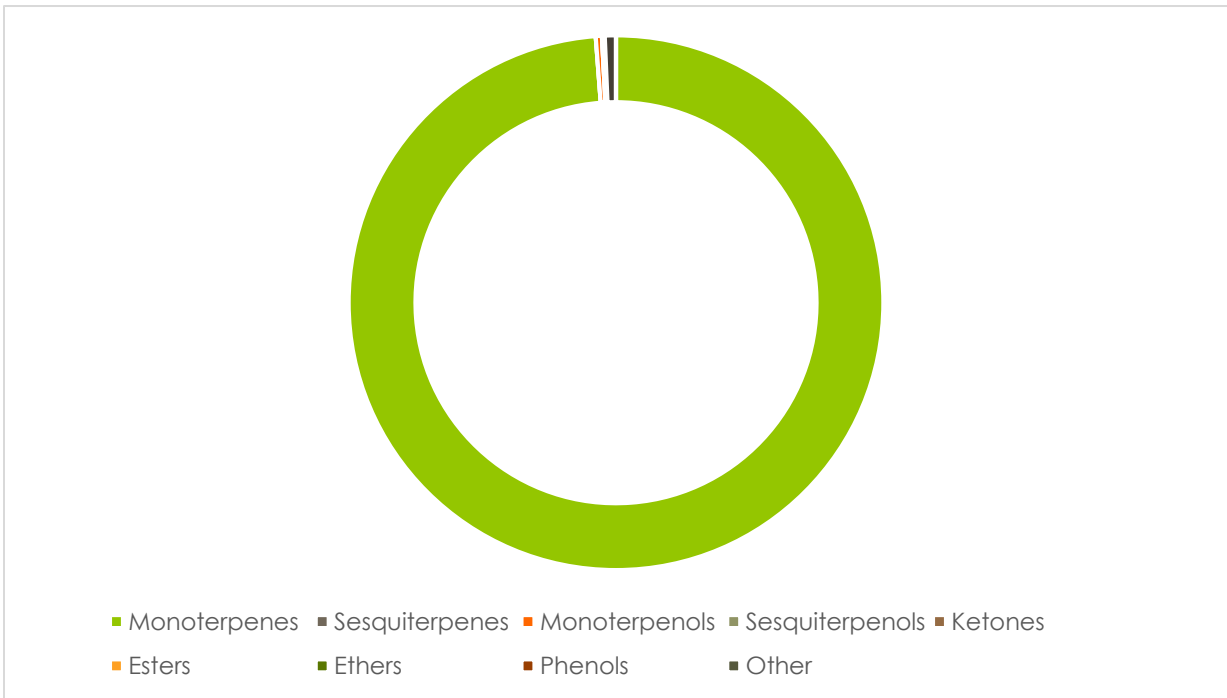
Phone: 317-361-5044 E-mail: Adam@essentialvalidationservices.com

Summary of Analyses

A fresh sample of Tangerine (Citrus reticulata blanco var tangerina) Essential Oil (10 uL in .5 to .5 mL Hexane + ETOH) was prepared and analyzed via split injection GC/EI-MS.

Main Compounds	Percentages
Limonene	87.12%
gamma-Terpinene	6.07%
para-Cymene	2.34%
Myrcene	1.76%

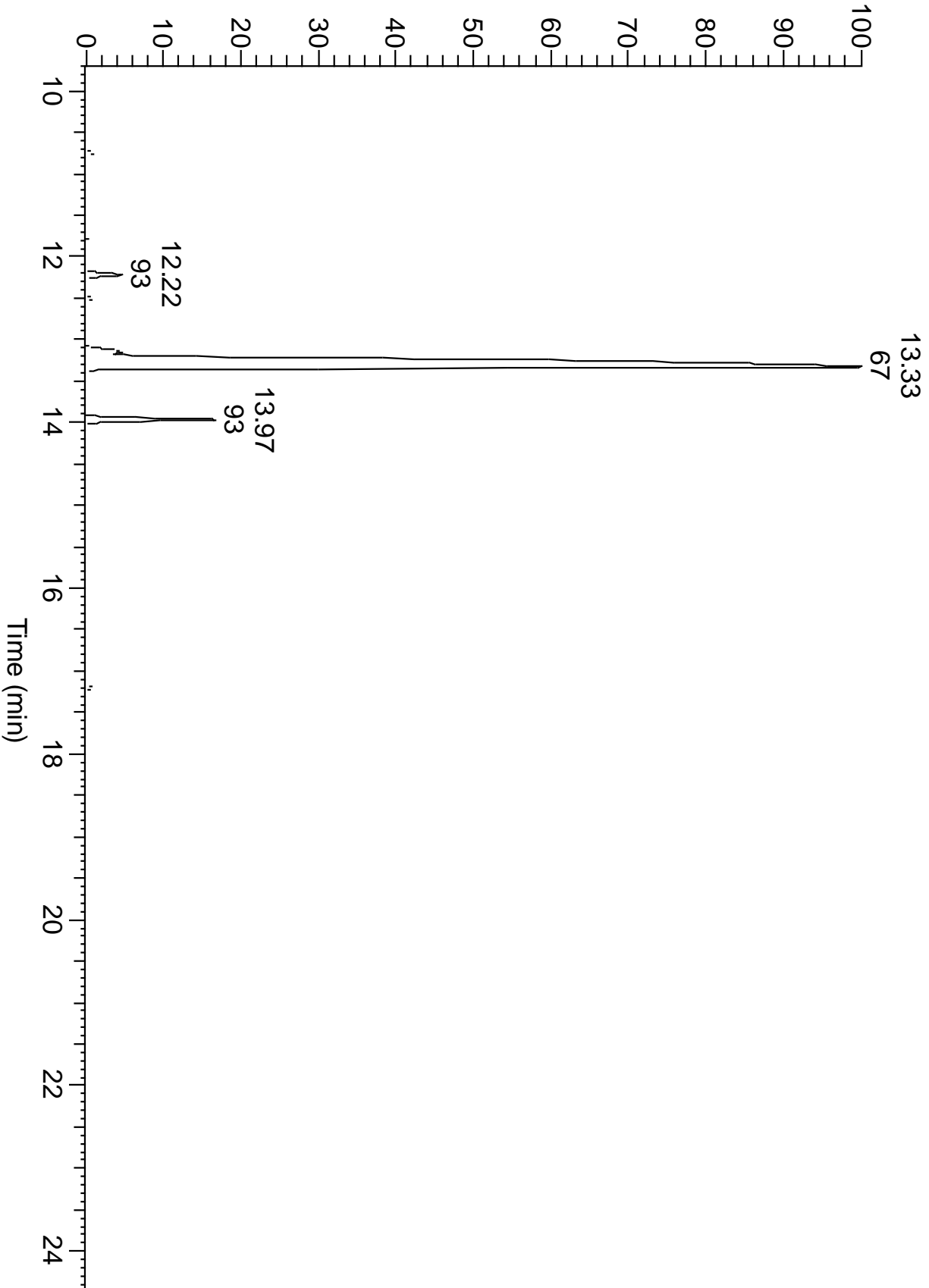
Monoterpenes	Sesquiterpenes	Monoterpenols	Sesquiterpenols	Ketones
98.66%	0.00%	0.37%	0.00%	0.12%
Esters	Ethers	Aldehydes	Phenols	Other
0.00%	0.05%	0.67%	0.00%	0.00%



ESSENTIAL VALIDATION SERVICES | 747 SW 2ND AVE GAINESVILLE, FLORIDA 32601 | 317-361-5044



RT: 9.69 - 24.56



ESSENTIAL VALIDATION SERVICES | 747 SW 2ND AVE GAINESVILLE, FLORIDA 32601 | 317-361-5044

