

Client



Source



Rosemary (Camphor) (*Rosmarinus officinalis*)

Sample

Rosemary (Camphor) (*Rosmarinus officinalis*)

Batch #:..... NF-RSMC-20-A

Type:..... Essential Oil

CAS Number:... 8000-25-7

Nature's Fusions

Client



Website



Primary

22.38%

Camphor

20.88%

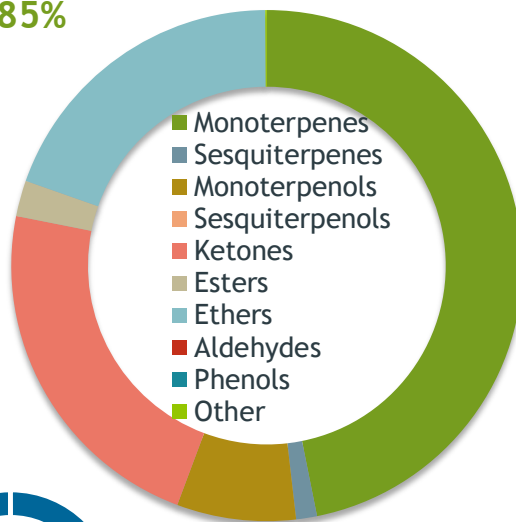
alpha-Pinene

19.22%

1,8-Cineole

Monoterpenes

46.85%



Percentage Identified

Result



Conclusion

No adulterants, diluents, or contaminants were detected via this method. This oil meets the expected profile for genuine Essential Oil of Rosemary (Camphor) (*Rosmarinus officinalis*)

Internal Number: | EVS-4370



Essential Validation Services

747 SW 2nd Ave IMB 12 Suite 306  
Gainesville, FL 32601

317.361.5044 |  
<https://essentialvalidationservices.com/>

*Alan Chastain*

Monoterpenes	46.85%	46.85%
Sesquiterpenes	1.32%	1.32%
Monoterpenols	7.53%	7.53%
Sesquiterpenols	0.00%	0.00%
Ketones	22.41%	22.41%
Esters	2.27%	2.27%
Ethers	19.52%	19.52%
Aldehydes	0.00%	0.00%
Phenols	0.00%	0.00%
Other	0.10%	0.10%

Client


 Nature's FUSIONS  
ESSENTIAL OILS

Source


*Rosemary (Camphor) (Rosmarinus officinalis)*

Total Percentage		99.90%		
Number	RT	Area %	Compound Name	Chemical Family
1	7.15	0.05%	Xi-Fenchene	Monoterpene
2	7.77	0.24%	Tricyclene	Monoterpene
3	7.94	0.03%	alpha-Thujene	Monoterpene
4	8.21	20.88%	alpha-Pinene	Monoterpene
5	8.39	0.14%	alpha-Fenchene	Monoterpene
6	8.80	11.64%	Camphene	Monoterpene
7	9.74	0.04%	Sabinene	Monoterpene
8	9.90	5.16%	beta-Pinene	Monoterpene
9	10.48	1.54%	Myrcene	Monoterpene
10	11.02	0.11%	Pseudolimonene	Monoterpene
11	11.13	0.04%	alpha-Phellandrene	Monoterpene
12	11.24	0.04%	delta-3-Carene	Monoterpene
13	11.60	0.13%	alpha-Terpinene	Monoterpene
14	11.73	0.02%	o-Cymene	Monoterpene
15	11.93	1.79%	para-Cymene	Monoterpene
16	12.15	4.90%	Limonene	Monoterpene
17	12.26	19.22%	1,8-Cineole	Monoterpene Ether
18	12.52	0.03%	(Z)-beta-Ocimene	Monoterpene
19	13.45	0.04%	gamma-Terpinene	Monoterpene
20	14.68	0.03%	Terpinolene	Monoterpene
21	14.76	0.03%	Fenchone	Monoterpene Ketone
22	15.40	1.01%	Linalool	Monoterpenol
23	15.52	0.30%	alpha-Pinene oxide	Monoterpene Ether
24	16.20	0.07%	Fenchol	Monoterpenol
25	17.03	0.05%	Terpinen-1-ol	Monoterpenol
26	17.45	22.38%	Camphor	Monoterpene Ketone
27	17.60	0.18%	cis-beta-Terpineol	Monoterpenol
28	17.73	0.05%	Camphene hydrate	Monoterpenol
29	18.18	1.48%	Isoborneol	Monoterpenol
30	18.44	0.05%	beta-Terpineol	Monoterpenol
31	18.59	2.79%	Borneol	Monoterpenol
32	19.00	0.04%	Terpinen-4-ol	Monoterpenol
33	19.69	1.42%	alpha-Terpineol	Monoterpenol
34	19.92	0.39%	gamma-Terpineol	Monoterpenol
35	22.28	0.12%	Linalyl acetate	Monoterpene Ester

ESSENTIAL VALIDATION SERVICES | 747 SW 2<sup>ND</sup> AVE GAINESVILLE, FLORIDA 32601 | 317-361-5044

- Essential Oil testing is performed by using qualitative GC-MS. Method: SOP.T.01 Client Method  
 - This report may not be published without the consent of Essential Validation Services.  
 - Chromatograph image may be requested  
 - This report is valid for 1 year from the analyzed date

Client

Nature's FUSIONS  
ESSENTIAL OILS

Source



Rosemary (Camphor) (*Rosmarinus officinalis*)

Number	RT	Area %	Compound Name	Chemical Family
36	23.714	2.15%	Bornyl acetate	Monoterpene Ester
37	27.65	0.02%	alpha-Copaene	Sesquiterpene
38	28.98	0.02%	Longifolene	Sesquiterpene
39	29.45	1.14%	beta-Caryophyllene	Sesquiterpene
40	30.92	0.14%	alpha-Humulene	Sesquiterpene

ESSENTIAL VALIDATION SERVICES | 74 / SW 2<sup>ND</sup> AVE GAINESVILLE, FLORIDA 32601 | 352-301-5044

- Essential Oil testing is performed by using qualitative GC-MS. Method: SOP.T.01 Client Method
- This report may not be published without the consent of Essential Validation Services.
- Chromatograph image may be requested
- This report is valid for 1 year from the analyzed date

Client		Source	
--------	--	--------	--

*Rosemary (Camphor) (Rosmarinus officinalis)*


ESSENTIAL VALIDATION SERVICES | 74 SW 2nd AVE GAINESVILLE, FLORIDA 32601 | 351-361-5044

- Essential Oil testing is performed by using qualitative GC-MS. Method: SOP.T.01 Client Method
- This report may not be published without the consent of Essential Validation Services.
- Chromatograph image may be requested
- This report is valid for 1 year from the analyzed date

Client



Source



Rosemary (*Rosmarinus officinalis*)  
NF-RSMC-20-A

Sample

Rosemary (*Rosmarinus officinalis*)  
Batch #:..... NF-RSMC-20-A  
Type:..... Essential Oil  
CAS Number:... 8000-25-7  
**Nature's Fusions**

Client



Website

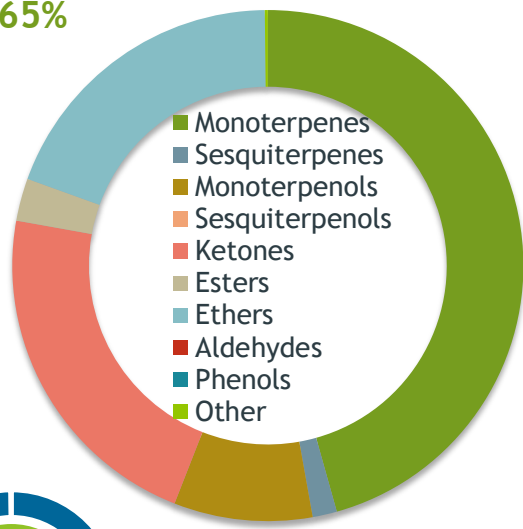


Primary

**21.77%** | Camphor  
**18.86** | alpha-Pinene  
**18.70%** | 1,8-Cineole

**Monoterpenes**

45.65%



**Percentage Identified**

Result



Conclusion

No adulterants, diluents, or contaminants were detected via this method. This oil meets the expected profile for genuine Essential Oil of Rosemary (*Rosmarinus officinalis*)

Internal Number: | EVS-4083



**Essential Validation Services**

747 SW 2nd Ave IMB 12 Suite 306  
Gainesville, FL 32601

317.361.5044 | <https://essentialvalidationservices.com/>

*Alan Christen*

Monoterpenes	45.65%	45.65%
Sesquiterpenes	1.54%	1.54%
Monoterpenols	8.76%	8.76%
Sesquiterpenols	0.00%	0.00%
Ketones	21.87%	21.87%
Esters	2.69%	2.69%
Ethers	19.30%	19.30%
Aldehydes	0.00%	0.00%
Phenols	0.00%	0.00%
Other	0.19%	0.19%

ESSENTIAL VALIDATION SERVICES | 747 SW 2ND AVE GAINESVILLE, FLORIDA 32601 | 317-361-5044

Client


 Nature's FUSIONS  
ESSENTIAL OILS

Source

Rosemary (*Rosmarinus officinalis*)

NF-RSMC-20-A

Total Percentage		99.81%		
Number	RT	Area %	Compound Name	Chemical Family
1	6.48	0.02%	Cyclofenchene	Monoterpene
2	7.23	0.04%	Xi-Fenchene	Monoterpene
3	7.85	0.20%	Tricyclene	Monoterpene
4	8.03	0.02%	alpha-Thujene	Monoterpene
5	8.30	18.86%	alpha-Pinene	Monoterpene
6	8.49	0.14%	alpha-Fenchene	Monoterpene
7	8.90	11.48%	Camphene	Monoterpene
8	9.05	0.01%	Thuja-2,4(10)-diene	Monoterpene
9	9.84	0.04%	Sabinene	Monoterpene
10	10.00	5.47%	beta-Pinene	Monoterpene
11	10.58	1.59%	Myrcene	Monoterpene
12	11.13	0.10%	Pseudolimonene	Monoterpene
13	11.23	0.05%	alpha-Phellandrene	Monoterpene
14	11.34	0.04%	delta-3-Carene	Monoterpene
15	11.71	0.12%	alpha-Terpinene	Monoterpene
16	12.04	2.07%	para-Cymene	Monoterpene
17	12.26	5.27%	Limonene	Monoterpene
18	12.39	18.70%	1,8-Cineole	Monoterpene Ether
19	12.63	0.03%	(Z)-beta-Ocimene	Monoterpene
20	13.56	0.06%	gamma-Terpinene	Monoterpene
21	14.79	0.04%	Terpinolene	Monoterpene
22	14.88	0.02%	Fenchone	Monoterpene Ketone
23	15.53	1.23%	Linalool	Monoterpenol
24	15.64	0.60%	alpha-Pinene oxide	Monoterpene Ether
25	16.09	0.04%	cis-para-Menth-2-en-1-ol	Monoterpenol
26	16.36	0.08%	beta-Thujone	Monoterpene Ketone
27	17.59	21.77%	Camphor	Monoterpene Ketone
28	17.72	0.19%	beta-Terpineol	Monoterpenol
29	17.87	0.03%	Camphene hydrate	Monoterpenol
30	18.31	1.71%	Isoborneol	Monoterpenol
31	18.57	0.05%	trans-beta-Terpineol	Monoterpenol
32	18.72	3.22%	Borneol	Monoterpenol
33	19.13	0.06%	Terpinen-4-ol	Monoterpenol
34	19.82	1.81%	alpha-Terpineol	Monoterpenol
35	20.05	0.42%	gamma-Terpineol	Monoterpenol

ESSENTIAL VALIDATION SERVICES | 747 SW 2<sup>ND</sup> AVE GAINESVILLE, FLORIDA 32601 | 317-361-5044

- Essential Oil testing is performed by using qualitative GC-MS. Method: SOP.T.01 Client Method  
 - This report may not be published without the consent of Essential Validation Services.  
 - Chromatograph image may be requested  
 - This report is valid for 1 year from the analyzed date

Client	 <b>Nature's FUSIONS</b> ESSENTIAL OILS	Source	
--------	--	--------	--

Rosemary (*Rosmarinus officinalis*)  
NF-RSMC-20-A

Number	RT	Area %	Compound Name	Chemical Family
36	20.85	0.25%	Fenchyl acetate	Monoterpenol
37	22.41	0.15%	Linalyl acetate	Monoterpene Ester
38	23.85	2.29%	Bornyl acetate	Monoterpene Ester
39	27.79	0.04%	alpha-Copaene	Sesquiterpene
40	29.11	0.06%	Longifolene	Sesquiterpene
41	29.59	1.31%	beta-Caryophyllene	Sesquiterpene
42	31.06	0.13%	alpha-Humulene	Sesquiterpene

ESSENTIAL VALIDATION SERVICES | 74 / SW 2<sup>nd</sup> AVE GAINESVILLE, FLORIDA 32601 | 352-381-3044

- Essential Oil testing is performed by using qualitative GC-MS. Method: SOP.T.01 Client Method  
- This report may not be published without the consent of Essential Validation Services.  
- Chromatograph image may be requested  
- This report is valid for 1 year from the analyzed date

Client



Source



# Rosemary (*Rosmarinus officinalis*) NF-RSMC-20-A


ESSENTIAL VALIDATION SERVICES | 141 SW 2nd AVE GAINESVILLE, FLORIDA 32601 | 352-361-5044

- Essential Oil testing is performed by using qualitative GC-MS. Method: SOP.T.01 Client Method  
- This report may not be published without the consent of Essential Validation Services.  
- Chromatograph image may be requested  
- This report is valid for 1 year from the analyzed date



Client



Source



Rosemary (*Rosmarinus officinalis*)  
NF-RSMI-20-A

Sample

Rosemary (*Rosmarinus officinalis*)  
Batch #:..... NF-RSMI-20-A  
Type:..... Essential Oil  
CAS Number:... 8000-25-7  
**Nature's Fusions**

Client



Website

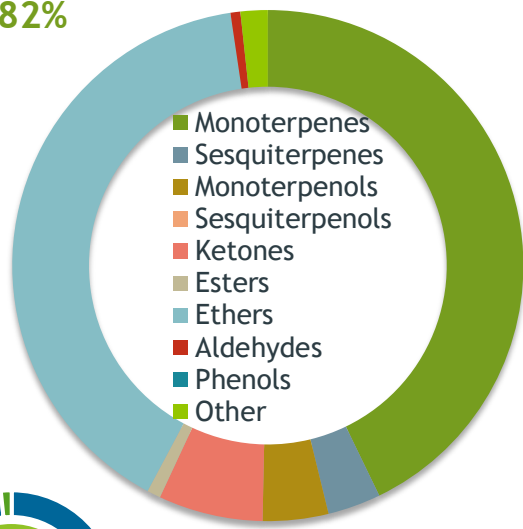


Primary

**39.78%** | **1,8-Cineole**  
**14.05** | **Limonene**  
**8.44%** | **beta-Pinene**

**Monoterpenes**

42.82%



**Percentage Identified**

Result



Conclusion

No adulterants, diluents, or contaminants were detected via this method. This oil meets the expected profile for genuine Essential Oil of Rosemary (*Rosmarinus officinalis*)

Internal Number: | EVS-4080



**Essential Validation Services**

747 SW 2nd Ave IMB 12 Suite 306  
Gainesville, FL 32601

317.361.5044 | <https://essentialvalidationservices.com/>

*Alan Christen*

Monoterpenes	42.82%	42.82%
Sesquiterpenes	3	3.36%
Monoterpenols	4	4.15%
Sesquiterpenols		0.00%
Ketones	6.6	6.61%
Esters		0.86%
Ethers	39.86%	39.86%
Aldehydes		0.62%
Phenols		0.00%
Other		1.72%

ESSENTIAL VALIDATION SERVICES | 747 SW 2ND AVE GAINESVILLE, FLORIDA 32601 | 317-361-5044

Client


 Nature's FUSIONS  
ESSENTIAL OILS

Source

Rosemary (*Rosmarinus officinalis*)

NF-RSMI-20-A

Total Percentage		98.37%		
Number	RT	Area %	Compound Name	Chemical Family
1	5.73	0.01%	cis-Hex-3-en-1-ol	Aliphatic Alcohol
2	7.78	0.01%	Hashishene	Monoterpene
3	7.86	0.06%	Tricyclene	Monoterpene
4	8.03	0.34%	alpha-Thujene	Monoterpene
5	8.30	6.87%	alpha-Pinene	Monoterpene
6	8.90	2.51%	Camphene	Monoterpene
7	9.85	1.08%	Sabinene	Monoterpene
8	10.03	8.44%	beta-Pinene	Monoterpene
9	10.25	0.05%	1-Octen-3-ol	Aliphatic Alcohol
10	10.43	0.03%	Octan-3-one	Aliphatic Ketone
11	10.60	1.82%	Myrcene	Monoterpene
12	11.14	0.04%	Pseudolimonene	Monoterpene
13	11.25	0.17%	alpha-Phellandrene	Monoterpene
14	11.35	0.13%	delta-3-Carene	Monoterpene
15	11.73	0.47%	alpha-Terpinene	Monoterpene
16	12.09	1.77%	para-Cymene	Monoterpene
17	12.33	14.05%	Limonene	Monoterpene
18	12.43	39.78%	1,8-Cineole	Monoterpene Ether
19	12.65	0.07%	(Z)-beta-Ocimene	Monoterpene
20	13.11	0.06%	(E)-beta-Ocimene	Monoterpene
21	13.60	4.62%	gamma-Terpinene	Monoterpene
22	14.10	0.06%	trans-Sabinene hydrate	Monoterpenol
23	14.25	0.02%	1-Octanol	Aliphatic Alcohol
24	14.80	0.30%	Terpinolene	Monoterpene
25	15.00	0.01%	para-Cymenene	Monoterpene
26	15.53	0.49%	Linalool	Monoterpenol
27	15.74	0.06%	Nonanal	Aliphatic Aldehyde
28	16.32	0.01%	Fenchol	Monoterpenol
29	16.58	0.02%	trans-para-Menth-2-en-1-ol	Monoterpenol
30	16.95	0.02%	cis-Limonene oxide	Monoterpene Ether
31	17.16	0.02%	trans-Limonene oxide	Monoterpene Ether
32	17.29	0.01%	trans-Pinocarveol	Monoterpenol
33	17.56	6.53%	Camphor	Monoterpene Ketone
34	17.92	0.05%	Citronellal	Monoterpene Aldehyde
35	18.73	1.73%	Borneol	Monoterpenol





Client



Source



Rosemary (*Rosmarinus officinalis*)  
NF-RSMI-19-A

Sample

Rosemary (*Rosmarinus officinalis*)  
Batch #:..... NF-RSMI-19-A  
Type:..... Essential Oil  
CAS Number:... 8000-25-7  
**Nature's Fusions**

Client



Website

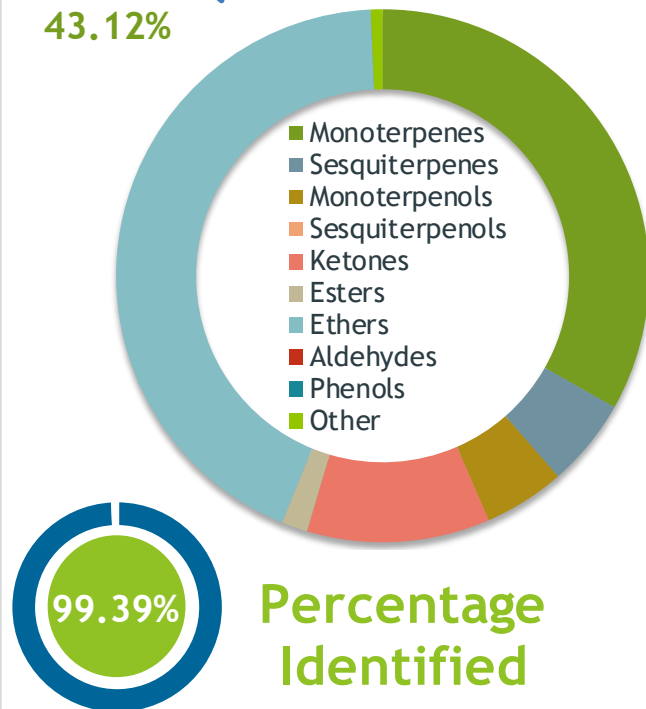


Primary

**42.94%** | 1,8-Cineole (Co-Eluting)  
**11.40%** | alpha-Pinene  
**11.09%** | Camphor

Ethers

43.12%



Result



Conclusion

No adulterants, diluents, or contaminants were detected via this method. This oil meets the expected profile for genuine essential oil of Rosemary (*Rosmarinus officinalis*)

Internal Number: | EVS-2865



**Essential Validation Services**

747 SW 2nd Ave IMB 12 Suite 306  
Gainesville, FL 32601

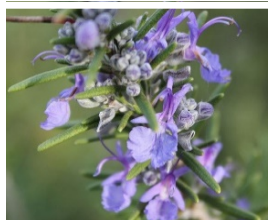
317.361.5044 |  
<https://essentialvalidationservices.com/>  
adam@essentialvalidationservices.com

Monoterpenes	33.21%	33.21%
Sesquiterpenes	5.35%	5.35%
Monoterpenols	4.92%	4.92%
Sesquiterpenols	0.00%	0.00%
Ketones	11.11%	11.11%
Esters	1.57%	1.57%
Ethers	43.12%	43.12%
Aldehydes	0.00%	0.00%
Phenols	0.01%	0.01%
Other	0.71%	0.71%

Client


**Nature's FUSIONS**  
 ESSENTIAL OILS

Source



*Rosemary (Rosmarinus officinalis)*  
 NF-RSMI-19-A

Total Percentage		99.39%			
Number	RT	Area %	Compound Name	RI	Chemical Family
1	6.54	0.01%	Toluene	765.00	Simple Phenolic
2	10.70	0.03%	Cyclofenchene	890.00	Monoterpene
3	10.86	0.02%	Santene	884.00	Normonoterpene
4	11.47	0.01%	Bornylene	902.50	Monoterpene
5	11.67	0.02%	Xi-Fenchene	910.50	Monoterpene
6	12.23	0.01%	Hashishene	922.00	Monoterpene
7	12.36	0.88%	Tricyclene	923.00	Monoterpene
8	12.60	0.19%	alpha-Thujene	927.80	Monoterpene
9	12.88	11.40%	alpha-Pinene	936.10	Monoterpene
10	13.05	0.03%	alpha-Fenchene	946.00	Monoterpene
11	13.49	6.72%	Camphene	950.30	Monoterpene
12	14.55	0.06%	Sabinene	973.00	Monoterpene
13	14.68	9.29%	beta-Pinene	974.00	Monoterpene
14	14.81	0.08%	1-Octen-3-ol	980.00	Aliphatic Alcohol
15	15.08	0.02%	Octan-3-one	981.00	Aliphatic Ketone
16	15.27	0.90%	Myrcene	989.20	Monoterpene
17	15.83	0.22%	alpha-Phellandrene	1002.00	Monoterpene
18	16.08	0.45%	delta-3-Carene	1008.00	Monoterpene
19	16.35	0.20%	alpha-Terpinene	1014.00	Monoterpene
20	16.69	1.81%	para-Cymene	1024.30	Monoterpene
21	17.06	42.94%	1,8-Cineole	1031.80	Monoterpene Ether
22	17.07	Co-Eluting	Limonene	1029.50	Monoterpene
23	17.22	0.08%	(Z)-beta-Ocimene	1037.80	Monoterpene
24	17.65	0.03%	(E)-beta-Ocimene	1047.70	Monoterpene
25	18.11	0.66%	gamma-Terpinene	1054.00	Monoterpene
26	18.46	0.04%	trans-Sabinene hydrate	1072.00	Monoterpenol
27	19.33	0.22%	Terpinolene	1092.10	Monoterpene
28	19.74	1.07%	Linalool	1099.00	Monoterpenol
29	20.37	0.03%	endo-Fenchol	1114.00	Monoterpenol
30	21.38	0.04%	trans-Pinocarveol	1143.75	Monoterpenol
31	21.61	11.09%	Camphor	1147.55	Monoterpene Ketone
32	22.41	1.68%	Borneol	1168.71	Monoterpenol
33	22.82	0.44%	Terpinen-4-ol	1180.57	Monoterpenol
34	23.31	1.62%	alpha-Terpineol	1191.71	Monoterpenol
35	26.76	1.57%	Bornyl acetate	1288.29	Monoterpene Ester

 ESSENTIAL VALIDATION SERVICES | 747 SW 2<sup>ND</sup> AVE GAINESVILLE, FLORIDA 32601 | 317-361-5044







## *Essential Validation Services*





**Sample:**

---

Client: | Nature's Fusions  
Sample: | Rosemary (Rosmarinus officinalis)  
Batch # | 4268303  
CAS Number | 8000-25-7  
Type: | Essential Oil

---

**Conclusion:**

- No adulterants, diluents, or contaminants were detected via this method.
- Chemotype Camphor



X 

---

Validated By:

Essential Validation Services

747 SW 2nd Ave, Gainesville, FL 32601

Phone: 317-361-5044 E-mail: Adam@essentialvalidationservices.com

**Summary of Analyses**

---

A fresh sample of Rosemary (Rosmarinus officinalis) Essential Oil (10 uL in .5to.5 mL Hexane +

EtOH) was prepared and analyzed via split injection GC/EI-MS.

Main Compounds	Percentages
Camphor	20.61%
alpha-Pinene	18.97%
1,8-Cineole	17.30%
Camphene	12.45%
beta-Pinene	5.19%
Limonene	4.82%
para-Cymene	3.52%
Borneol	2.93%
Borneol	2.93%
beta-Caryophyllene	1.58%
alpha-Terpineol	1.53%
Isoborneol	1.52%
Myrcene	1.26%

Monoterpenes	Sesquiterpenes	Monoterpenols	Sesquiterpenols	Ketones
47.33%	1.92%	8.47%	0.00%	20.67%
Esters	Ethers	Aldehydes	Phenols	Other
3.56%	17.30%	0.00%	0.00%	0.27%

