

Client



Source



Clove Bud (*Eugenia Caryophyllata*)
NF-CLOV-19-A

Sample

Clove Bud (*Eugenia Caryophyllata*)

Batch #:..... NF-CLOV-19-A

Type:..... Essential Oil

CAS Number:... 8000-34-8

Nature's Fusions

Client



Website



Primary

74.86%

Eugenol

13.42%

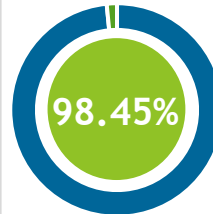
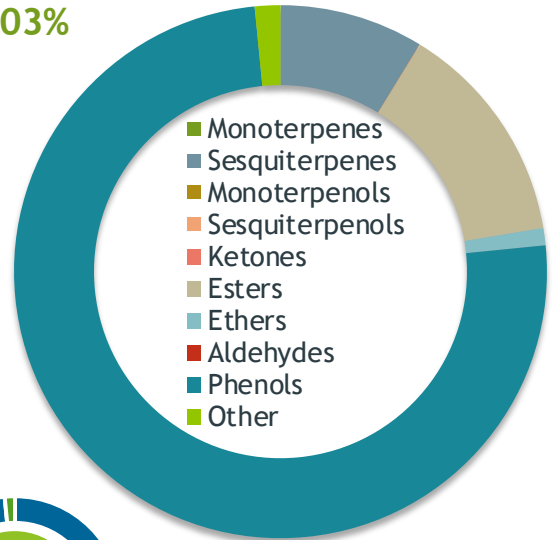
Eugenyl acetate

7.52%

beta-Caryophyllene

Phenols

75.03%



Percentage Identified

Result



Conclusion

No adulterants, diluents, or contaminants were detected via this method. This oil meets the expected profile for genuine essential oil of Clove Bud (*Eugenia Caryophyllata*)

Internal Number: | EVS-2884



Essential Validation Services

747 SW 2nd Ave IMB 12 Suite 306
Gainesville, FL 32601

317.361.5044 |

<https://essentialvalidationservices.com/>

adam@essentialvalidationservices.com

Monoterpenes	0.01%
Sesquiterpenes	8.74%
Monoterpenols	0.01%
Sesquiterpenols	0.03%
Ketones	0.00%
Esters	13.59%
Ethers	1.04%
Aldehydes	0.00%
Phenols	75.03%
Other	1.55%

Client



Source



Clove Bud (Eugenia Caryophyllata)
NF-CLOV-19-A

Total Percentage		98.45%			
Number	RT	Area %	Compound Name	RI	Chemical Family
1	16.89	0.01%	Limonene	1029.50	Monoterpene
2	19.77	0.01%	Linalool	1099.00	Monoterpenol
3	23.46	0.14%	Methyl salicylate	1192.29	Phenolic Ester
4	25.52	0.13%	Chavicol	1253.00	Phenylpropanoid
5	28.97	0.05%	alpha-Cubebene	1355.71	Sesquiterpene
6	29.46	74.86%	Eugenol	1365.89	Phenylpropanoid
7	29.94	0.22%	alpha-Copaene	1379.00	Sesquiterpene
8	30.63	0.04%	Methyl Eugenol	1407.27	Phenylpropanoid
9	31.41	7.52%	beta-Caryophyllene	1427.14	Sesquiterpene
10	32.46	0.91%	alpha-Humulene	1461.43	Sesquiterpene
11	33.21	0.01%	gamma-Murolene	1478.86	Sesquiterpene
12	33.85	0.03%	alpha-Murolene	1500.25	Sesquiterpene
13	34.53	13.42%	Eugenyl acetate	1524.75	Phenylpropanoid Ester
14	36.03	0.03%	Isocaryophyllene oxide	1554.50	Monoterpene Ester
15	36.42	0.95%	Caryophyllene oxide	1594.86	Sesquiterpene Ether
16	37.16	0.09%	Humulene epoxide II	1606.43	Sesquiterpene Ether
17	37.65	0.03%	1-epi-Cubenol	1628.00	Sesquiterpenol

ESSENTIAL VALIDATION SERVICES | 747 SW 2ND AVE GAINESVILLE, FLORIDA 32601 | 317-361-5044

- This report is the digitally signed and will only be considered valid if the signature is intact.
 - This report may not be published without the consent of Essential Validation Services.
 - Chromatograph image may not show full run time

Client



Source



Clove Bud (Eugenia Caryophyllata)
NF-CLOV-19-A

Table with 6 columns: Number, RT, Area %, Compound Name, RI, Chemical Family. The table contains 25 empty rows for data entry.

ESSENTIAL VALIDATION SERVICES | 747 SW 2ND AVE GAINESVILLE, FLORIDA 32601 | 317-361-5044

Client



Nature's FUSIONS
ESSENTIAL OILS

Source



Clove Bud (*Eugenia Caryophyllata*)
NF-CLOV-19-B

Sample

Clove Bud (*Eugenia Caryophyllata*)

Batch #:..... NF-CLOV-19-B

Type:..... Essential Oil

CAS Number:... 8000-34-8

Nature's Fusions

Client



Nature's FUSIONS
ESSENTIAL OILS

Website



Primary

79.19%

Eugenol

9.02%

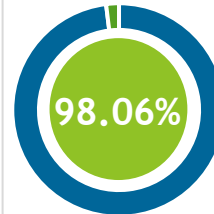
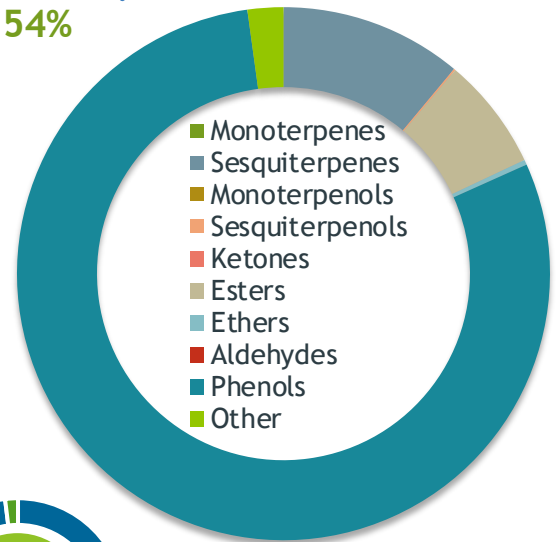
beta-Caryophyllene

6.68%

Eugenyl acetate

Phenols

79.54%



Percentage Identified

Result



Conclusion

No adulterants, diluents, or contaminants were detected via this method. This oil meets the expected profile for genuine essential oil of Clove Bud (*Eugenia Caryophyllata*)

Internal Number: | EVS-2671



Essential Validation Services

747 SW 2nd Ave IMB 12 Suite 306
Gainesville, FL 32601

317.361.5044 | essentialvalidationservices.com

adam@essentialvalidationservices.com

Adam Christen

Monoterpenes		0.00%
Sesquiterpenes	11	11.06%
Monoterpenols		0.00%
Sesquiterpenols		0.10%
Ketones		0.00%
Esters	6	6.83%
Ethers		0.30%
Aldehydes		0.00%
Phenols	79.54%	79.54%
Other		2.17%

- This report is the digitally signed and will only be considered valid if the signature is intact.
- This report may not be published without the consent of Essential Validation Services.
- Chromatograph image may not show full run time

Client



Source



Clove Bud (Eugenia Caryophyllata)
NF-CLOV-19-B

Total Percentage		98.06%			
Number	RT	Area %	Compound Name	RI	Chemical Family
1	8.93	0.23%	Furfural	828.00	Furan
2	23.57	0.08%	Methyl salicylate	1192.29	Phenolic Ester
3	25.59	0.35%	Chavicol	1253.00	Phenylpropanoid
4	29.09	0.01%	alpha-Cubebene	1355.71	Sesquiterpene
5	29.59	79.19%	Eugenol	1365.89	Phenylpropanoid
6	30.07	0.51%	alpha-Copaene	1379.00	Sesquiterpene
7	31.56	9.02%	beta-Caryophyllene	1427.14	Sesquiterpene
8	32.60	1.15%	alpha-Humulene	1461.43	Sesquiterpene
9	33.15	0.20%	gamma-Murolene	1478.86	Sesquiterpene
10	33.95	0.11%	(E,E)-alpha-Farnesene	1508.14	Sesquiterpene
11	34.41	0.06%	delta-Cadinene	1524.14	Sesquiterpene
12	34.62	6.68%	Eugenyl acetate	1524.75	Phenylpropanoid Ester
13	35.61	0.07%	Isocaryophyllene oxide	1554.50	Monoterpene Ester
14	36.55	0.30%	Caryophyllene oxide	1594.86	Sesquiterpene Ether
15	37.78	0.10%	1-epi-Cubenol	1628.00	Sesquiterpenol

ESSENTIAL VALIDATION SERVICES | 747 SW 2ND AVE GAINESVILLE, FLORIDA 32601 | 317-361-5044

Client



Nature's FUSIONS
ESSENTIAL OILS

Source



Clove Bud (Eugenia Caryophyllata)
NF-CLOV-19-B

Number	RT	Area %	Compound Name	RI	Chemical Family

ESSENTIAL VALIDATION SERVICES | 747 SW 2ND AVE GAINESVILLE, FLORIDA 32601 | 317-361-5044

- This report is the digitally signed and will only be considered valid if the signature is intact.
- This report may not be published without the consent of Essential Validation Services.
- Chromatograph image may not show full run time



Essential Validation Services





Sample:

Client: | Nature's Fusions
 Sample: | Clove Bud (Eugenia Caryophyllata)
 Batch # | R119865-01
 CAS Number | 8000-34-8
 Type: | Essential Oil

Conclusion:

- No adulterants, diluents, or contaminants were detected via this method.



X *Adam Christen*

Validated By:

Essential Validation Services

747 SW 2nd Ave, Gainesville, FL 32601

Phone: 317-361-5044 E-mail: Adam@essentialvalidationservices.com

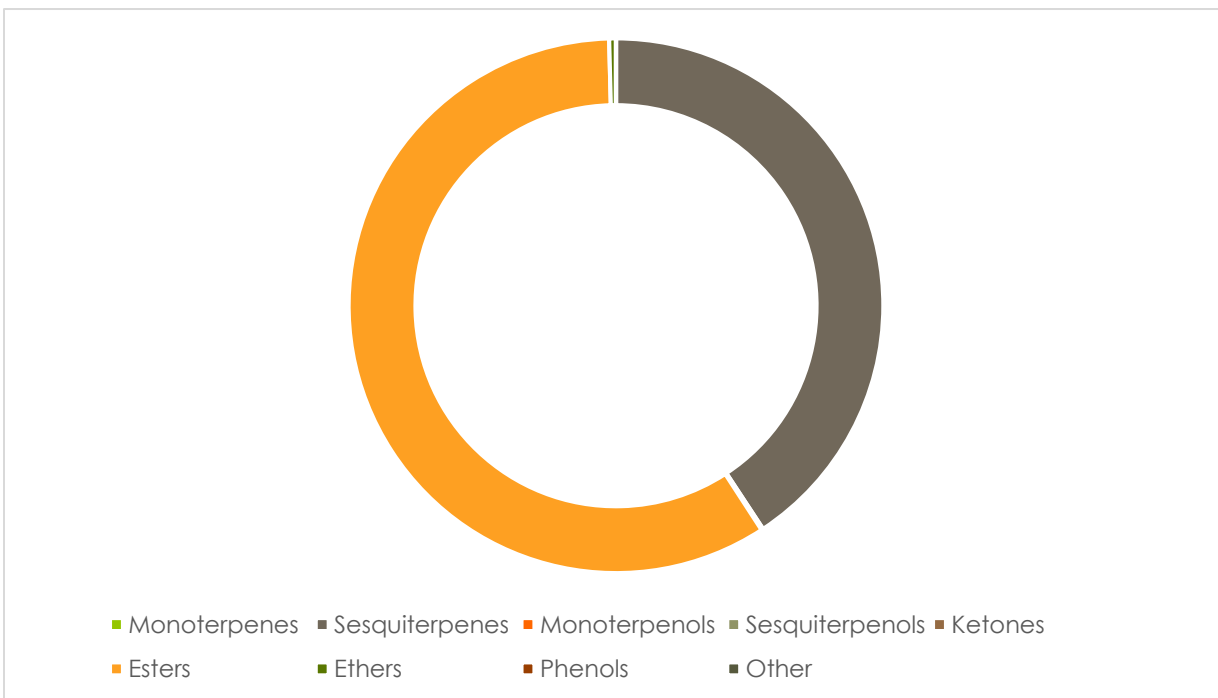
Summary of Analyses

A fresh sample of Clove Bud (Eugenia Caryophyllata) Essential Oil (10 uL in .5to.5 mL Hexane + ETOH) was prepared and analyzed via split injection GC/EI-MS.



Main Compounds	Percentages
Eugenol	69.77%
Eugenyl acetate	17.13%
beta-Caryophyllene	9.49%
alpha-Humulene	1.16%
delta-Cadinene	0.57%

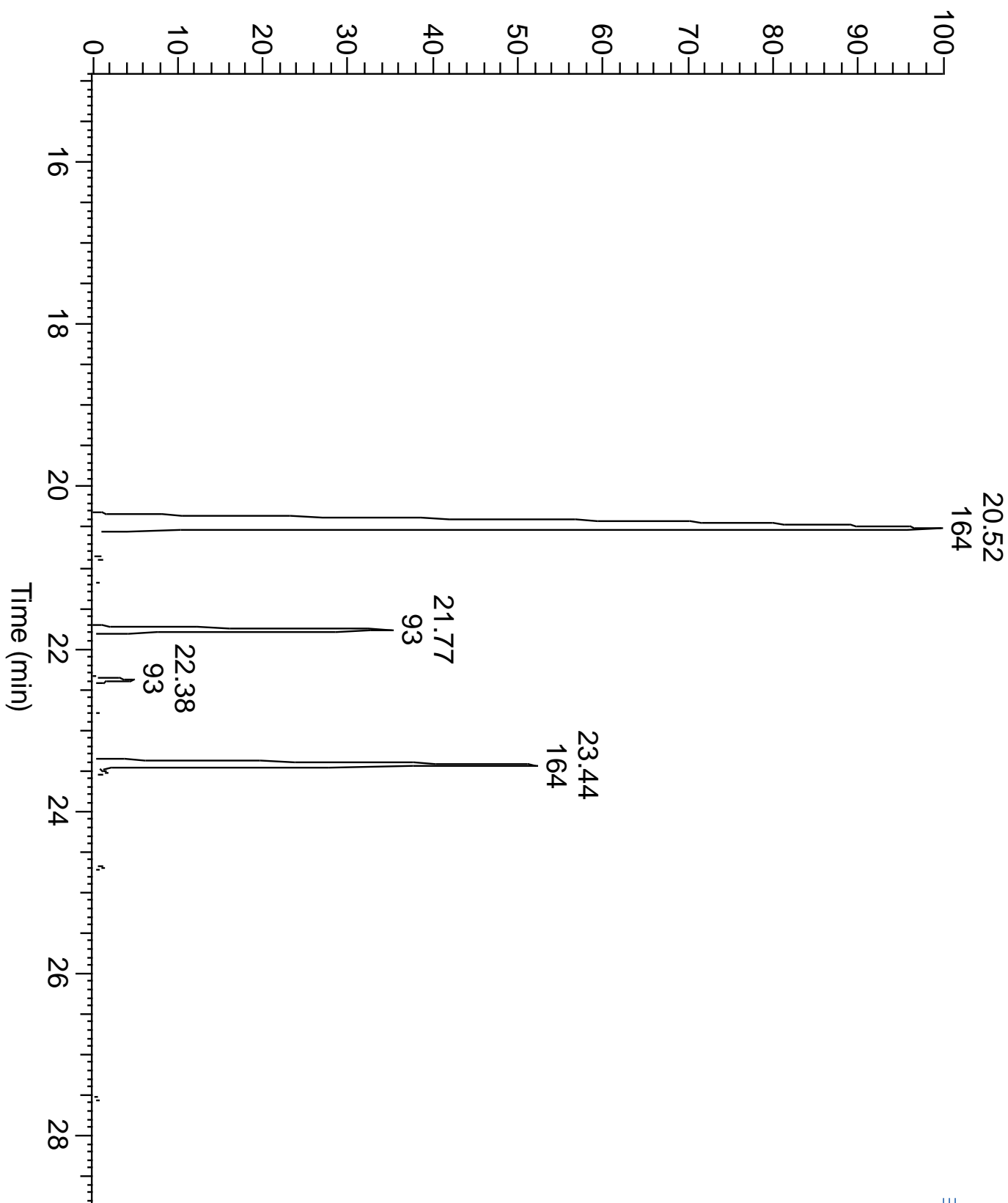
Monoterpenes	Sesquiterpenes	Monoterpenols	Sesquiterpenols	Ketones
0.00%	11.93%	0.03%	0.00%	0.00%
Esters	Ethers	Aldehydes	Phenols	Other
17.21%	0.12%	0.00%	69.95%	0.00%



ESSENTIAL VALIDATION SERVICES | 747 SW 2ND AVE GAINESVILLE, FLORIDA 32601 | 317-361-5044



RT: 14.90 - 29.08



ESSENTIAL VALIDATION SERVICES | 747 SW 2ND AVE GAINESVILLE, FLORIDA 32601 | 317-361-5044



Essential Validation Services





Sample:

Client: | Nature's Fusions
Sample: | Clove (Syzygium aromaticum)
Batch # | 1507496
CAS Number | 8000-34-8
Type: | Essential Oil

Conclusion:

- No adulterants, diluents, or contaminants were detected via this method.



X *Adam Christen*

Validated By:

Essential Validation Services

747 SW 2nd Ave, Gainesville, FL 32601

Phone: 317-361-5044 E-mail: Adam@essentialvalidationservices.com

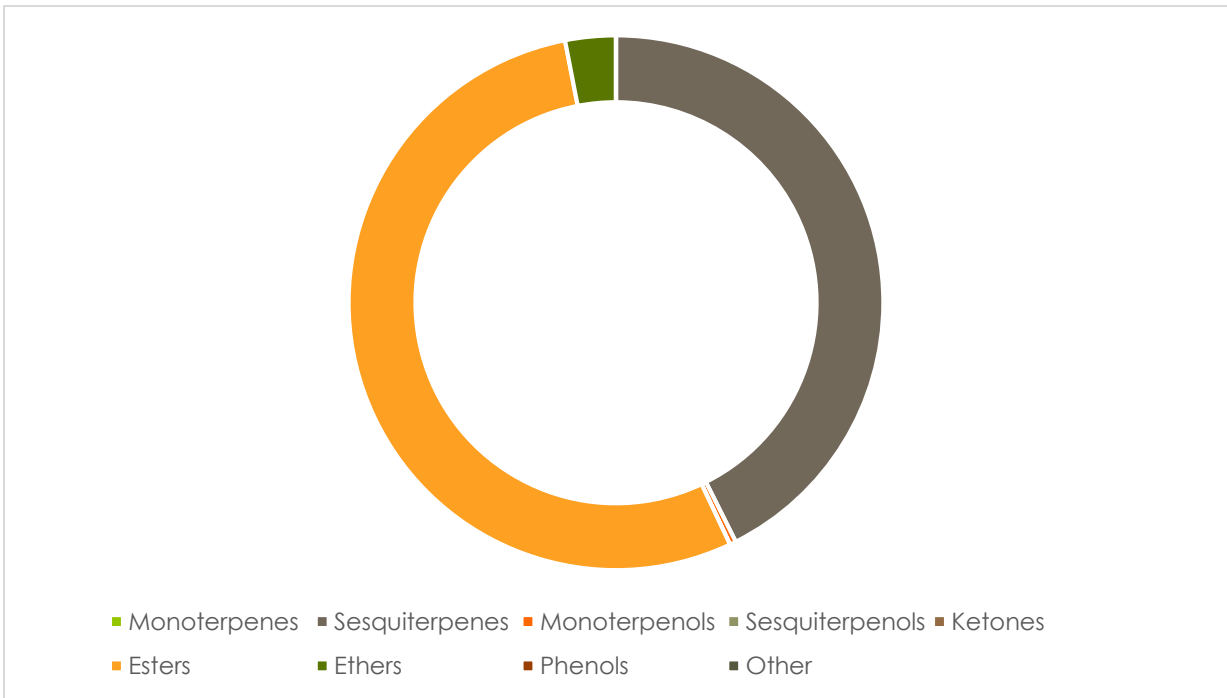
Summary of Analyses

A fresh sample of Clove (Syzygium aromaticum) Essential Oil (10 uL in .5to.5 mL Hexane + ETOH) was prepared and analyzed via split injection GC/EI-MS.



Main Compounds	Percentages
Eugenol	71.65%
Eugenyl acetate	13.86%
beta-Caryophyllene	8.94%
alpha-Humulene	1.18%
Caryophyllene oxide	0.63%

Monoterpenes	Sesquiterpenes	Monoterpenols	Sesquiterpenols	Ketones
0.00%	11.15%	0.10%	0.00%	0.00%
Esters	Ethers	Aldehydes	Phenols	Other
14.12%	0.80%	0.00%	71.90%	0.00%



ESSENTIAL VALIDATION SERVICES | 747 SW 2ND AVE GAINESVILLE, FLORIDA 32601 | 317-361-5044



RT: 16.70 - 29.68

